

# ControlUp for Virtual Servers

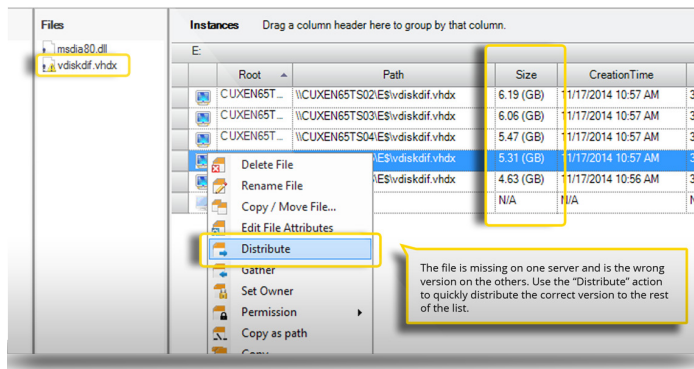
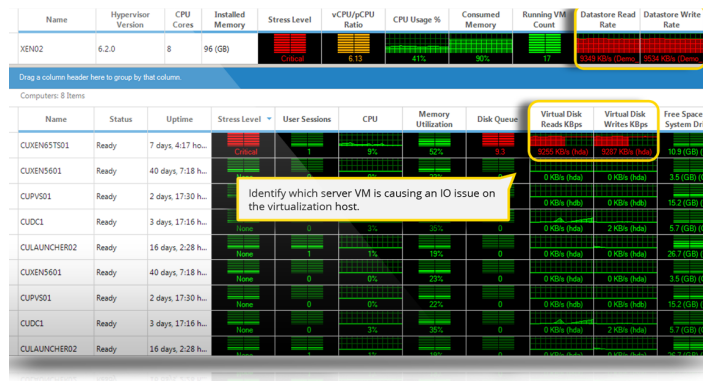


A fundamental part of every virtualization admin's job is to manage and maintain servers that are healthy, stable, and fine-tuned to your end-users and provide services with the best performance and uptime possible. By managing, monitoring and proactively troubleshooting the unique issues that crop up in a virtual environment, ControlUp helps you clearly see, in real-time everything that is going on in your VDI environment.

## Troubleshooting Performance Issues

Multiple server VMs are hosted on a single physical host. Oftentimes, we see that a single VM can cause a performance issue on the host itself, which can in turn affect all of the other guests.

With ControlUp's dashboard, virtual server admins quickly spot performance issues across multiple layers from the physical hosts and VMs all the way to specific services and processes. Easily correlating performance metrics in real-time allows for the accelerated detection of root cause issues.



## Easier Maintenance

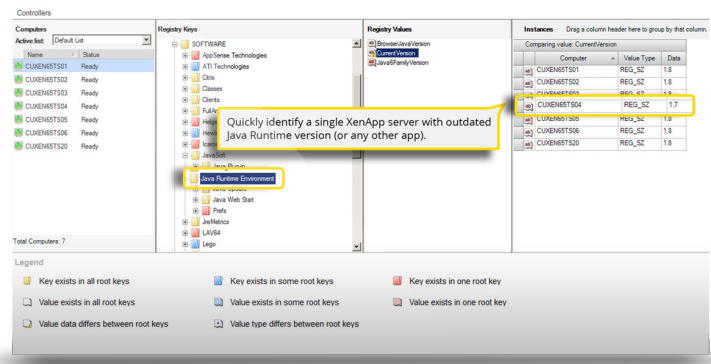
Day-to-day experience has shown that some server workloads like IIS or RDS need to be cloned to be exact matches of each other. While there are vendor-specific ways of helping to do this, it is not always practical or possible.

ControlUp's dashboard is made up of [controllers](#) that make maintaining file system, registry, service status, and program/patch installations easier. By quickly showing the differences between systems, ControlUp gives you the opportunity to remediate quickly and in real-time. For example, an IIS server farm can be easily updated or an unauthorized change on one farm member discovered and corrected simply through the ControlUp dashboard. ControlUp controllers.

## Application Troubleshooting

If a critical back-end app like Apache Tomcat or IIS stops working on a single server, it is the job of the server admin to check it out and find the needle in the haystack causing the issue. Since the problem could be anywhere in the server configuration it is imperative that the admin have the ability to root out cause.

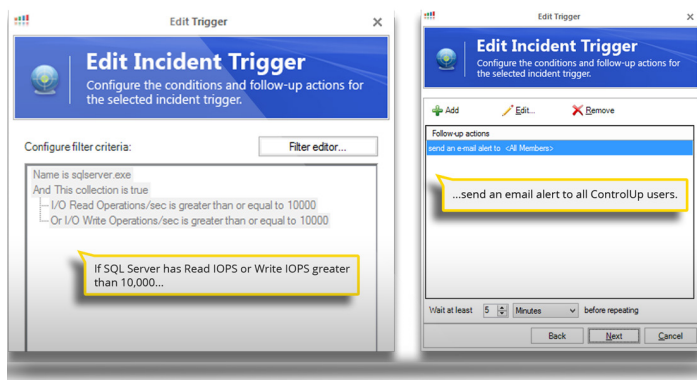
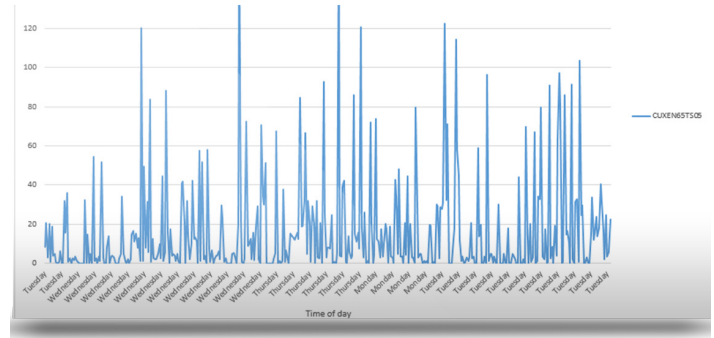
With ControlUp you can compare the Windows configuration between a working and non-working server and quickly isolate the element causing the application to fail. The ControlUp dashboard also includes a view into the Windows Registry, File-System, Services and installed programs and updates.



## Historical Reporting

Server admins need historical reports for capacity planning, performance management and application usage analysis.

Incorporating a full historical reporting module, ControlUp enables customers to save unlimited performance metrics and usage data for hosts, servers, and even processes. The ControlUp [Reporter](#) analyzes the historical data and creates Excel graphs and reports.



## Alerting

In order to deal with critical server performance and configuration issues in a timely manner, server admins need to be notified in real-time when issues are detected. Common issues include specific processes like SQL server service consuming too much IOPS/CPU or critical service crashes.

ControlUp has a built-in alerting mechanism that allows server admins to build triggers based on a huge quantity of problems. By alerting the server admin team, whether by email or push notification, when service metrics cross their thresholds, ControlUp provides a clear picture for drill-down and analysis.

ControlUp is trusted by these and many more great customers!



## Free Download

Download a ControlUp free 30-day trial. After 30 days, or anytime before then, you can convert to a Pro or Enterprise license by contacting [sales@controlup.com](mailto:sales@controlup.com).